



**British Columbia Ground and Inland Water Search
and Rescue Training and Operational Support Model**

DATA MANAGEMENT SYSTEM (DMS)

PRIMARY OBJECTIVES

1. Document operational history in order to identify and project trends in the types of incident responses.
2. Use incident response history to identify and determine training requirements.
3. Document and track training of all BC GSAR volunteers.
4. Document and track equipment life-cycle asset management, including depreciation of major capital items.
5. Document subject behaviour profiles in an ISRID-compatible (International Search and Rescue Information Database) format in order to contribute to the NSS (National Search and rescue Secretariat) KMS (Knowledge Management System).

SECONDARY OBJECTIVES

1. Submission of task reports on line
2. Tracking of volunteer hours from, task reports (operational), training, administration, maintenance and prevention.

COLLATERAL BENEFITS

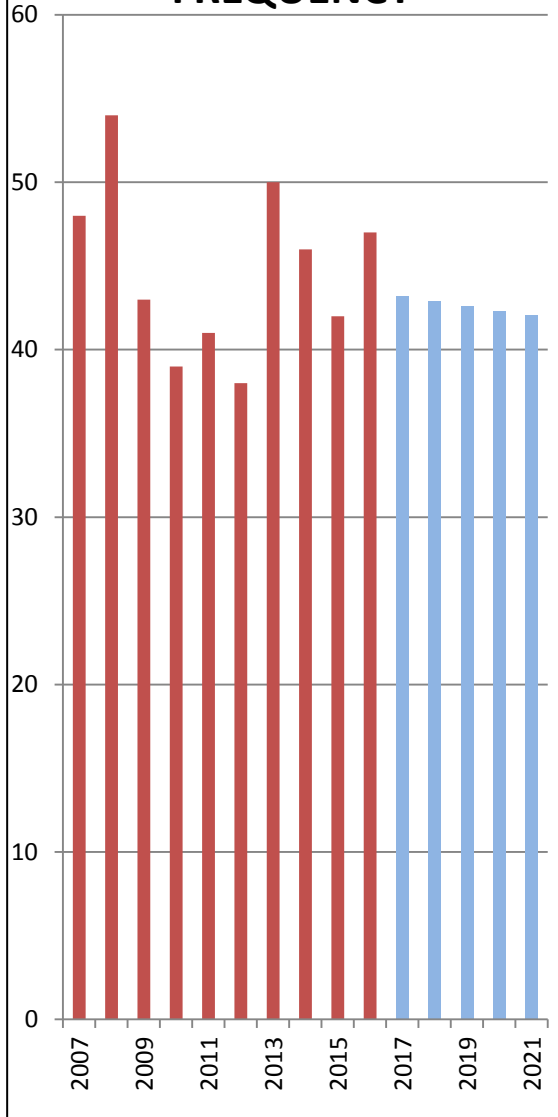
1. Some potential vendors also have incident management and GIS products that tie into a comprehensive database.
2. Some potential vendors have the ability to link into a paging system.
3. Requests from the media for current statistical information can be expedited without having to constantly contact SAR groups.
4. Information to provide justification for funding at local, regional and provincial levels.
5. A 'one stop shop' for statistical information.
6. The potential to measure the impact of SAR prevention initiatives.

KENT HARRISON SAR DATA

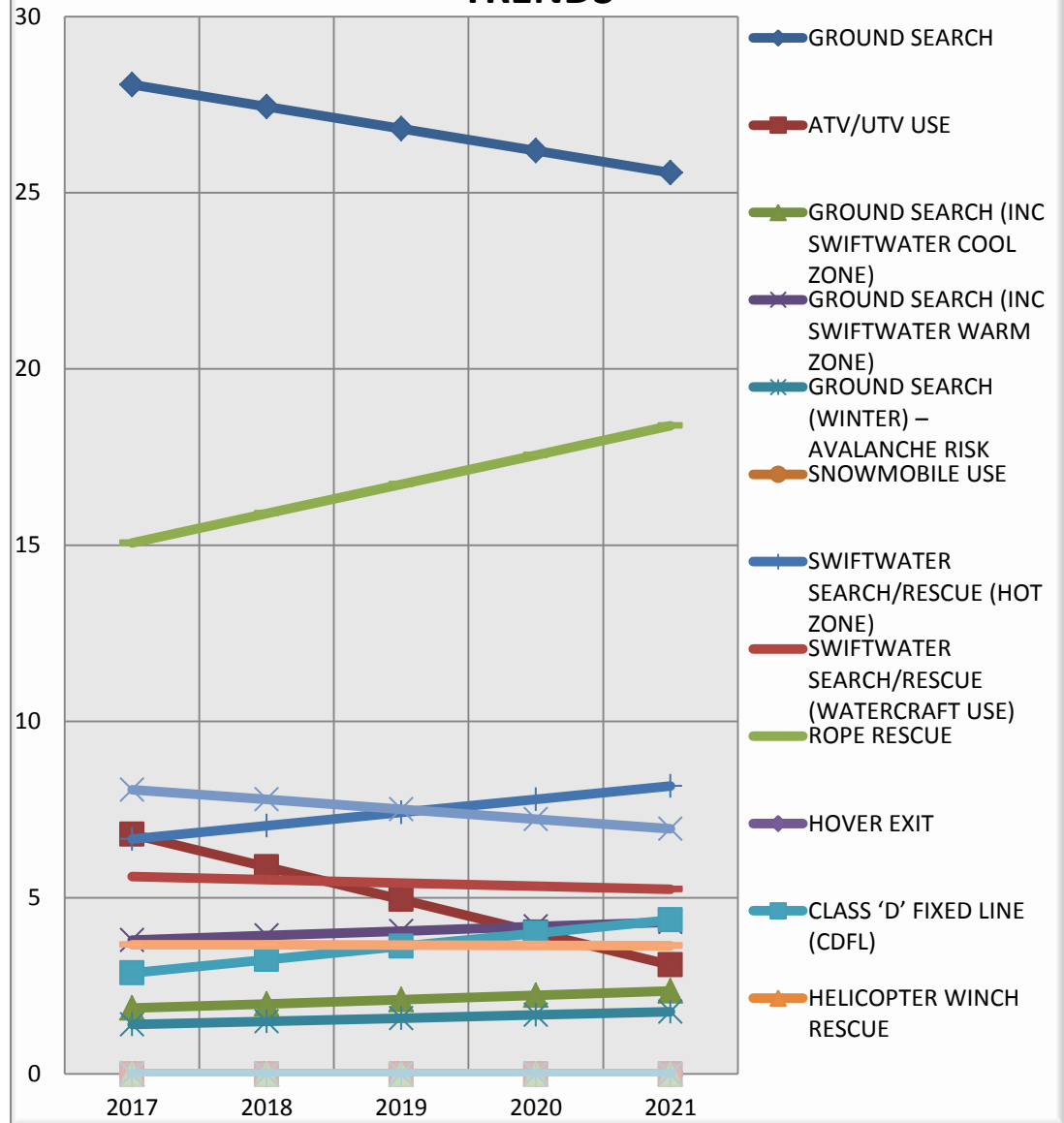
SUMMARY

| INCIDENT COMPONENTS | 2007 | 2008 | 2009 | 2010 | 2011 | 2012 | 2013 | 2014 | 2015 | 2016 | FORECAST | | | | | 5-YEAR AVERAGE |
|---|------|------|------|------|------|------|------|------|------|------|----------|------|------|------|------|----------------|
| | | | | | | | | | | | 2017 | 2018 | 2019 | 2020 | 2021 | |
| GROUND SEARCH | 22 | 44 | 38 | 27 | 32 | 33 | 42 | 25 | 23 | 29 | 28 | 27 | 27 | 26 | 26 | 27 |
| ATV/UTV USE | 17 | 14 | 19 | 8 | 11 | 9 | 16 | 10 | 7 | 8 | 7 | 6 | 5 | 4 | 3 | 5 |
| GROUND SEARCH (INC SWIFTWATER COOL ZONE) | 0 | 0 | 1 | 2 | 0 | 1 | 7 | 0 | 0 | 1 | 2 | 2 | 2 | 2 | 2 | 2 |
| GROUND SEARCH (INC SWIFTWATER WARM ZONE) | 4 | 1 | 1 | 3 | 3 | 3 | 9 | 2 | 2 | 3 | 4 | 4 | 4 | 4 | 4 | 4 |
| GROUND SEARCH (WINTER) – AVALANCHE RISK | 0 | 0 | 2 | 1 | 0 | 2 | 1 | 1 | 0 | 2 | 1 | 1 | 2 | 2 | 2 | 2 |
| SNOWMOBILE USE | 0 | 0 | 1 | 1 | 0 | 0 | 0 | 0 | 0 | 1 | 0 | 0 | 0 | 0 | 0 | 0 |
| SWIFTWATER SEARCH/RESCUE (HOT ZONE) | 12 | 0 | 1 | 1 | 1 | 1 | 5 | 11 | 9 | 5 | 7 | 7 | 7 | 8 | 8 | 7 |
| SWIFTWATER SEARCH/RESCUE (WATERCRAFT USE) | 9 | 5 | 5 | 6 | 8 | 3 | 5 | 8 | 7 | 5 | 6 | 6 | 5 | 5 | 5 | 5 |
| ROPE RESCUE | 3 | 13 | 12 | 4 | 7 | 13 | 17 | 9 | 9 | 18 | 15 | 16 | 17 | 18 | 18 | 17 |
| HOVER EXIT | 0 | 0 | 0 | 0 | 0 | 0 | 0 | 0 | 0 | 1 | 0 | 0 | 0 | 0 | 0 | 0 |
| CLASS 'D' FIXED LINE (CDFL) | 0 | 0 | 0 | 0 | 0 | 0 | 1 | 0 | 2 | 5 | 3 | 3 | 4 | 4 | 4 | 4 |
| HELICOPTER WINCH RESCUE | 0 | 0 | 0 | 0 | 0 | 0 | 0 | 0 | 0 | 0 | 0 | 0 | 0 | 0 | 0 | 0 |
| FLAT WATER SEARCH/RESCUE | 14 | 11 | 5 | 13 | 9 | 6 | 9 | 10 | 12 | 7 | 8 | 8 | 8 | 7 | 7 | 8 |
| FLAT ICE RESCUE | 0 | 0 | 0 | 0 | 0 | 0 | 0 | 0 | 0 | 0 | 0 | 0 | 0 | 0 | 0 | 0 |
| TRACKING | 0 | 0 | 0 | 0 | 0 | 0 | 0 | 0 | 0 | 0 | 0 | 0 | 0 | 0 | 0 | 0 |
| AVALANCHE RESPONSE | 0 | 0 | 0 | 0 | 0 | 0 | 0 | 0 | 0 | 0 | 0 | 0 | 0 | 0 | 0 | 0 |
| MOUNTAIN SEARCH/RESCUE | 0 | 0 | 0 | 0 | 0 | 0 | 0 | 0 | 1 | 0 | 0 | 0 | 0 | 0 | 0 | 0 |
| BODY RECOVERY | 5 | 3 | 5 | 2 | 5 | 2 | 2 | 2 | 8 | 3 | 4 | 4 | 4 | 4 | 4 | 4 |
| EVIDENCE SEARCH | 2 | 0 | 0 | 0 | 0 | 0 | 0 | 0 | 0 | 0 | 0 | 0 | 0 | 0 | 0 | 0 |
| CIVIL EMERGENCY - EVACUATIONS | 1 | 0 | 0 | 0 | 0 | 0 | 0 | 1 | 0 | 0 | 0 | 0 | 0 | 0 | 0 | 0 |
| CIVIL EMERGENCY - OTHER | 0 | 0 | 1 | 0 | 0 | 0 | 0 | 1 | 0 | 1 | 0 | 0 | 0 | 0 | 0 | 0 |
| CANINE SEARCH (USE OF CERTIFIED SAR DOG) | 0 | 0 | 0 | 0 | 0 | 0 | 0 | 0 | 0 | 0 | 0 | 0 | 0 | 0 | 0 | 0 |
| MOUNTED (HORSE) SEARCH | 0 | 0 | 0 | 0 | 0 | 0 | 0 | 0 | 0 | 0 | 0 | 0 | 0 | 0 | 0 | 0 |
| TOTAL INCIDENTS | 48 | 54 | 43 | 39 | 41 | 38 | 50 | 46 | 42 | 47 | 43 | 43 | 43 | 42 | 42 | 43 |

ANNUAL INCIDENT FREQUENCY



TRENDS



PROJECT MILESTONES

YEAR 1

- Development of 'statements of work' (Project Manager and Administrative Assistant).
- Call for expressions of interest, followed by evaluations and contract awards
- Development of data fields to collect historical response information
- Development of a RFP for on-line Data Management System supply.
- Historical response data collection.
- On-line Data Management System tender and award.
- Review of historical Data.
- Data utilization/system customization to produce training forecasts
- 5 Regional meetings to discuss training forecasts (Nanaimo, Prince George, Kamloops, Nelson & Richmond)

YEAR 2

- Review regional/group capacity/deficits
- Identify emerging trends (socio-economic, new recreational/industrial developments)
- Analyze regional and inter-regional mutual assistance structure
- Evaluate regional resource response potential
- Basic software training (320 SAR volunteers)
- (Richmond meeting will be the final meeting and will include the BCSARA Board)
- Insert regional input factors into software
- Review output
- Finalize database/fields
- **Prepare for full implementation in Apr 2018**
- Monitor/modify data for consistency, accuracy and effectiveness (year 3)

PROJECT VISION

A multi-level access provincial system that facilitates the following:

- Manage training at the SAR Group, Regional and Provincial levels, including projections for financial planning , frequency and delivery location.
- Forecast resource requirements to guide future plans on response capabilities.
- A one-stop-shop to locate resources for mutual assistance.
- An equipment life-cycle management feature that allows SAR groups to track capital costs/depreciation and maintenance /replacement schedules.
- At-a-glance statistics on call volume and volunteer hours.
- Consistent and continuous generation of missing person data in the ISRID format.
- A live and off-line Incident Management system, with a GIS component, that will standardize incident response documentation across the province.
- The ability to submit Task Reports to EMBC using information already documented in the Incident Management system.
- **A fully integrated and coordinated GSAR service where the ASM and SAR Group Guidelines are linked to the provincial database to facilitate sound and expedient evidence-based decisions.**